

# CORONAVIRUS

## COVID19

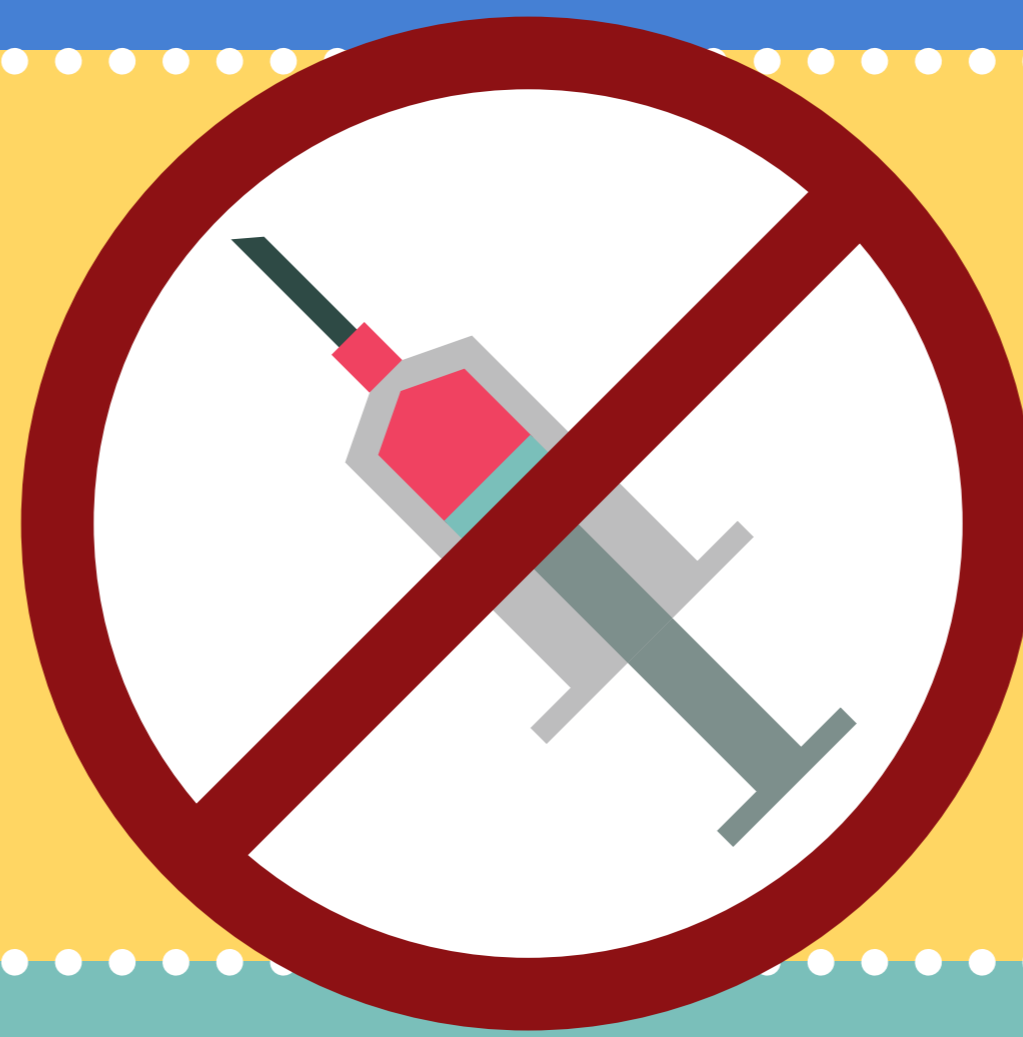
MANY PEOPLE WONDER ABOUT THE NEW CORONAVIRUS...

## WHAT IS IT?

- Corona is a large group of viruses, which can infect both humans and animals with cold related diseases. The intensity of the infection ranges from common cold to acute respiratory syndrome. More information is limited at the moment.

## IS THERE A TREATMENT FOR THE NEW CORONAVIRUS?

There is no treatment at present. Supportive medical care is provided to help relieve the acuteness of the symptoms and control complications.



## NO VACCINE AVAILABLE

## WHAT ARE THE SIGNS & SYMPTOMS OF THE NEW CORONAVIRUS INFECTION?



FEVER  
(ABOVE  
39°)



COUGHING



SHORTNESS  
OF BREATH

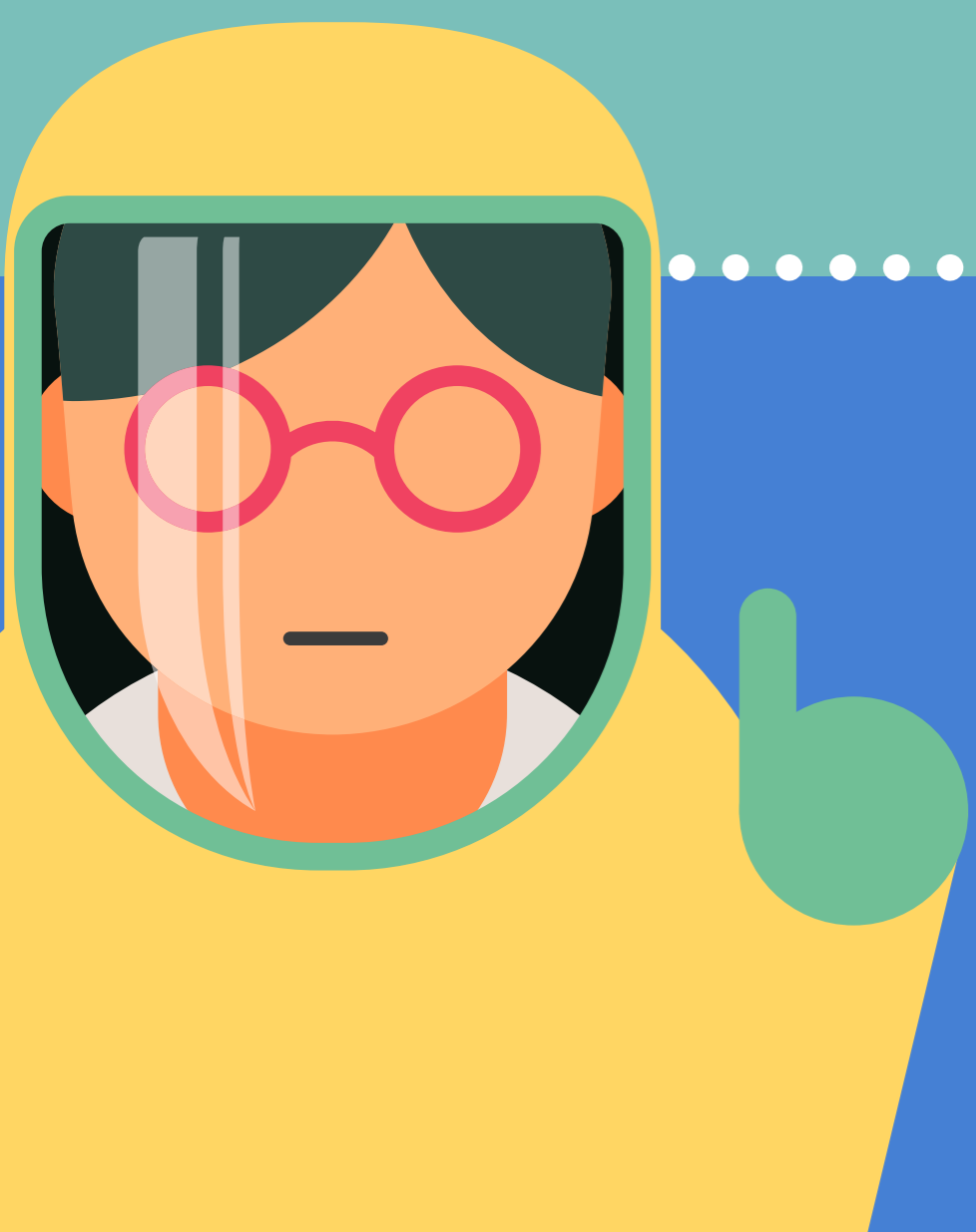
### IN ADVANCED CASES:



SEVERE  
PNEUMONIA



RENAL (KIDNEY)  
FAILURE



## WHAT ARE THE POSSIBLE METHODS OF PROTECTION FROM THE NEW CORONAVIRUS?



MAINTAIN  
GOOD  
HYGIENE



AVOID CLOSE  
CONTACT WITH PEOPLE  
WHO MAY HAVE COLD OR  
FLU-LIKE SYMPTOMS



THOROUGHLY COOK MEAT &  
EGGS, AVOID UNPROTECTED  
CONTACT WITH LIVE WILD  
OR FARM ANIMALS

FOR MORE INFORMATION CONTACT:

- 080 11 22 55 0 • [marketing@realitywellness.co.za](mailto:marketing@realitywellness.co.za)
- [www.realitywellness.co.za](http://www.realitywellness.co.za)